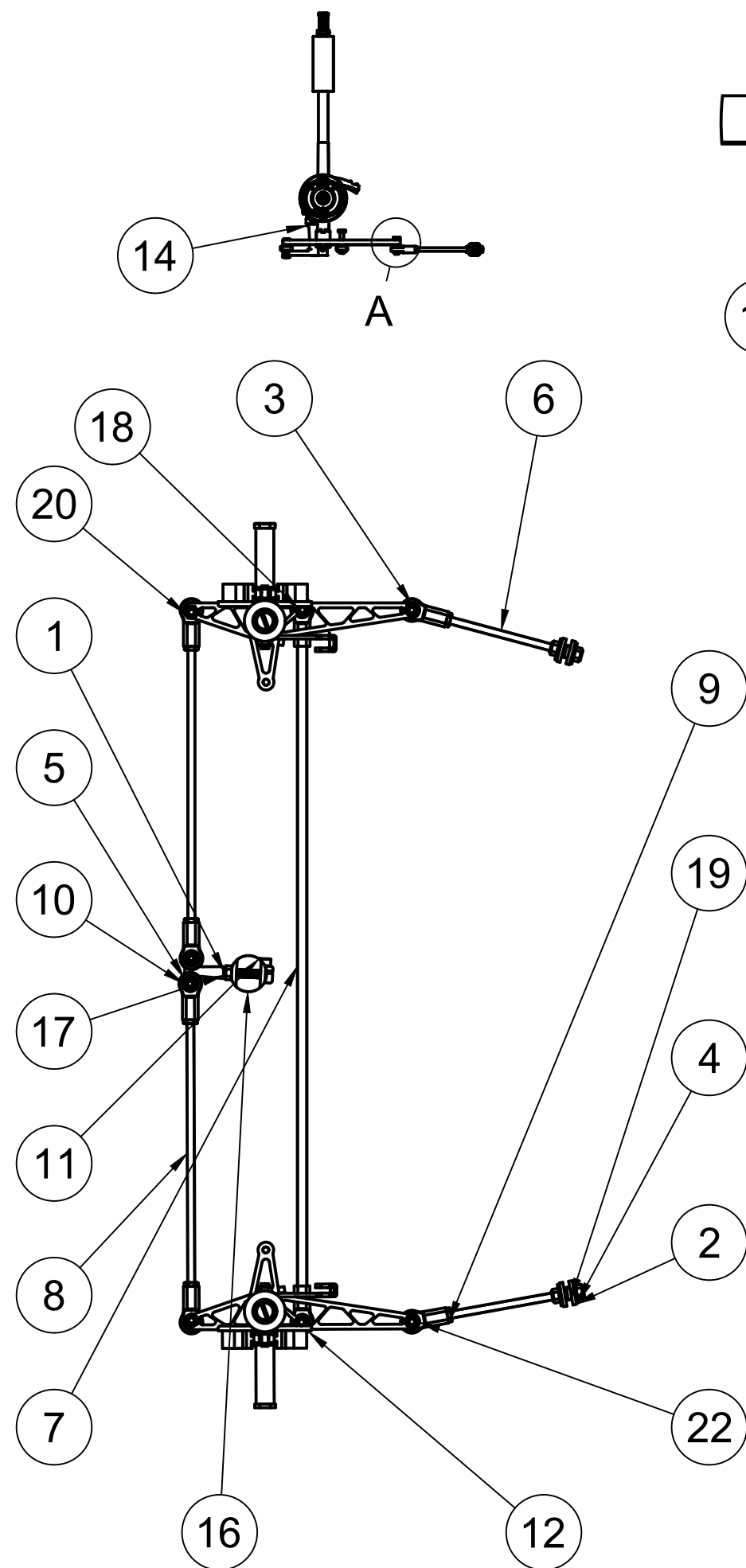
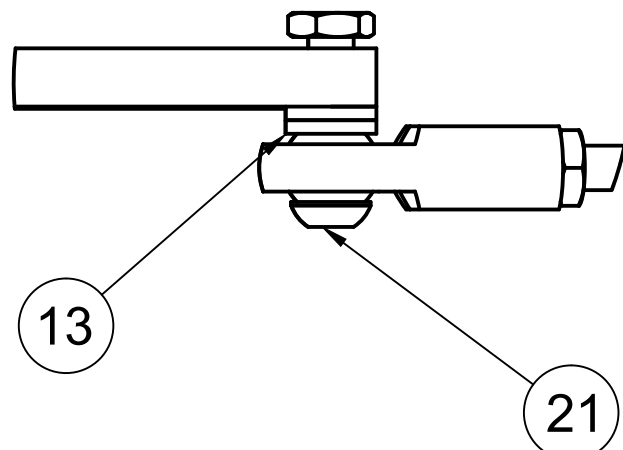


A (1:1)



Parts List				
Item	Part Number	Part Name	Qty	Description
1	A7_01_FD_P001	Locknut M6 DIN 985 A2	5	
2	A7_01_FD_P003	Rubber spacer D20	4	
3	A7_01_FD_P004	Low nut M6 DIN439 A2	14	
4	A7_01_FD_P006	Washer M6 DIN 7349 A2	4	
5	A7_01_FD_P008	Lower fork cardan Q,S,XS,DF v1	1	
6	A7_01_FD_P011	M6 threaded rod	2	
7	A7_01_FD_P007	Glass fiber rod	1	
8	A7_01_FD_P013	M6 threaded rod II	2	
9	A7_01_FD_P009	Metal rod end M6 (1)	6	
10	A7_01_FD_P012	Screw M6x20 BNK106	4	
11	A7_01_FD_P010	Screw M6x12 DIN 912 A2	1	
12	A7_01_FD_P014	Metal rod end M6-8	2	
13	A7_01_FD_P015	Washer A6 DIN 125 A2	8	
14	A7_01_FD_P016	Steering bearing v4	1	
15	A7_01_FD_P017	Steering washer v3	1	
16	A7_01_FD_P018	Upper fork cardan Q,S,XS,DF v2	1	
17	A7_01_FD_P019	Screw M6x40 DIN 7991 A2	1	
18	A7_02_FD_P002	Screw M6x35 BNK104A2	2	
19	A7_01_FD_P020	Grommet 14x6x10x3	2	
20	A7_03_FF_A000	A7_03_FF_A000 v138	1	
21	A7_01_FD_P021	Screw M6x25 BNK106	2	
22	A7_01_FF_B000	A7_01_FF_B000 v31	1	

Dept.	Technical reference	Created by <b>Flaviu Cioloca</b> 19.07.2023	Approved by	
		Document type	Document status	
		Title	Project <b>alpha 7_01</b>	Scale <b>1:10</b>
		DWG No. <b>Alpha Front direction+susp</b>	Rev.	Date of issue